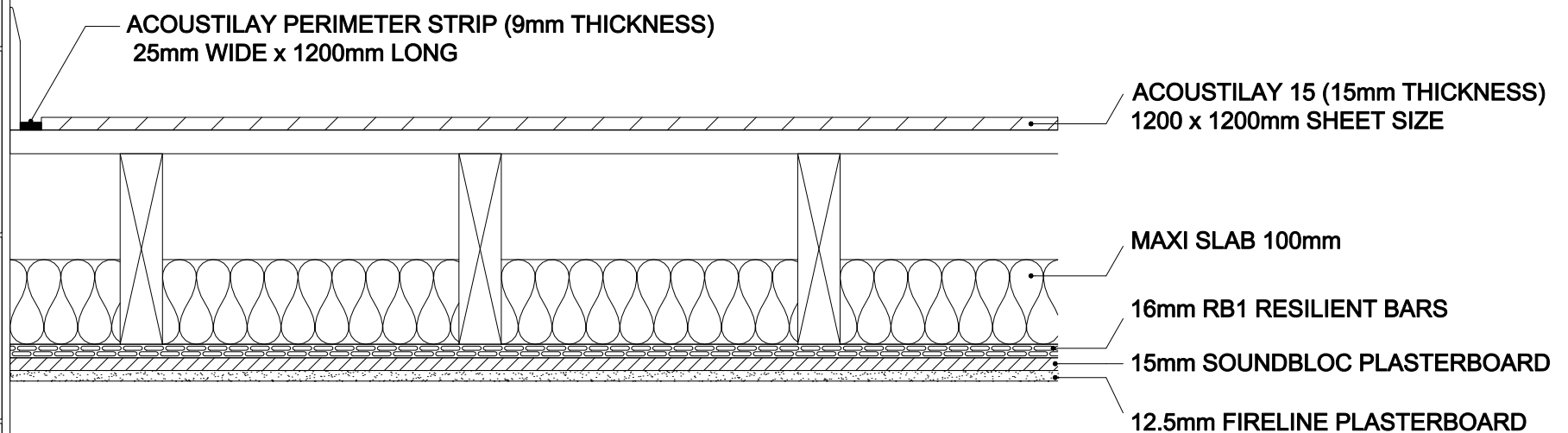


ACOUSTILAY ABOVE PLASTERBOARD ON RESILIENT BARS			
	AIRBORNE DnT'w + Ctr (dB)		IMPACT L'nT,w (dB)
Acoustilay 15 - with board	57	51	48

IN ALL NON-DOMESTIC ENVIRONMENTS, SUCH AS OFFICES, HOSPITALS AND SCHOOLS, IT IS RECOMMENDED THAT ACOUSTILAY MDF IS INSTALLED ONTO THE ACOUSTILAY REGARDLESS OF THE FLOOR FINISH



**SOUND REDUCTION SYSTEMS
ACOUSTILAY ABOVE PLASTERBOARD ON RESILIENT BARS**